

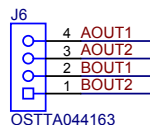
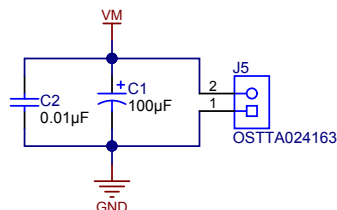
1

2

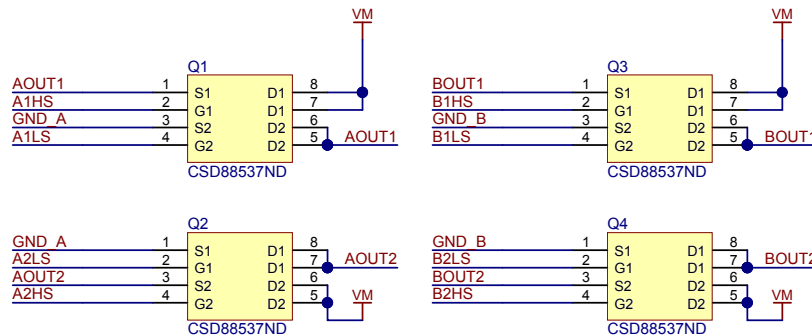
3

4

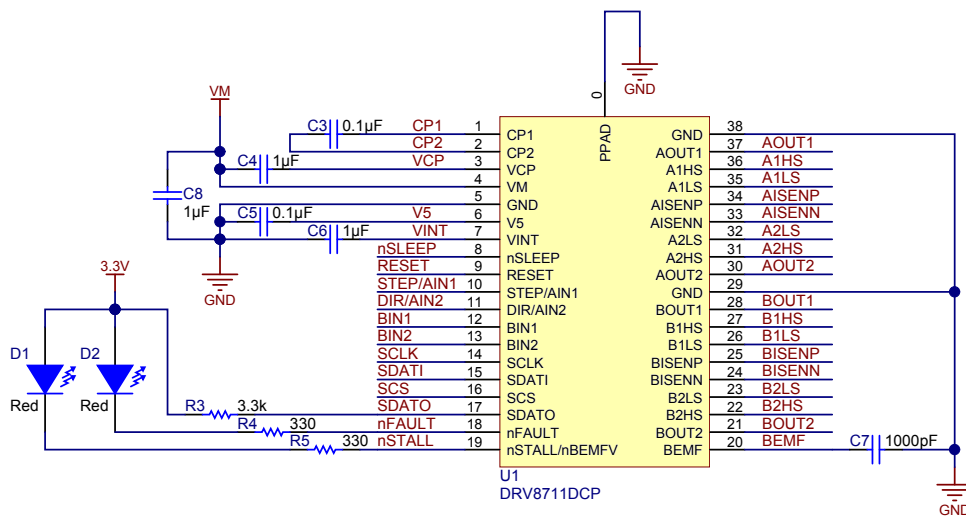
## Power/Motor Connections



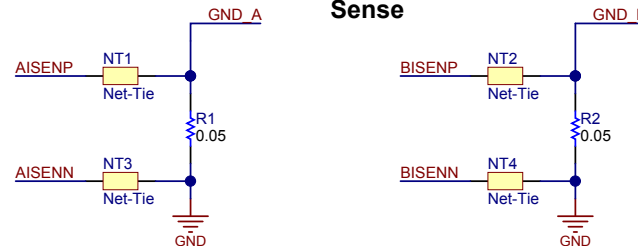
## NexFET Dual Power MOSFETs



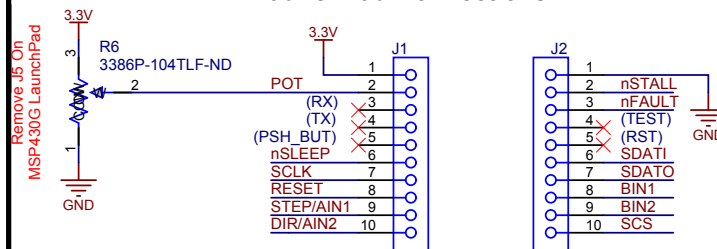
## DRV8711



## Sense



## LaunchPad Connections



PCB Number: BOOST-DRV8711  
PCB Rev: A

PCB  
LOGO

Texas Instruments

Texas Instruments and/or its licensors do not warrant the accuracy or completeness of this specification or any information contained therein. Texas Instruments and/or its licensors do not warrant that this design will meet the specifications, will be suitable for your application or fit for any particular purpose, or will operate in an implementation. Texas Instruments and/or its licensors do not warrant that the design is production worthy. You should completely validate and test your design implementation to confirm the system functionality for your application.

Number: BOOST-DRV8711 Rev: A  
SVN Rev: Not in version control  
Drawn By:  
Engineer: Nick Oborny

Designed for: Public Release  
Project Title: Stepper Motor BoosterPack  
Sheet Title:  
Assembly Variant: [No Variations]  
File: BOOST-DRV8711.SchDoc  
Contact: <http://www.ti.com/support>

Mod. Date: 4/4/2014  
Sheet: 1 of 1  
Size: A4  
© Texas Instruments 2013

1

2

3

4